

Y7 English Overview

How might our learning link to our studies in primary school?

Snake Island

Significant LOs:

- 1) Can I persuade someone to employ me as an explorer on Snake Island?
- 2) Can I give an 'After Dinner'-style talk, recounting their memories/adventures of being on Snake Island?



Skellig

Significant LOs:

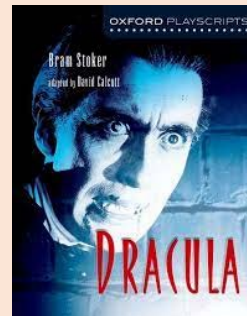
- 1) What is SLURP (starts of sentences; lengths of sentences; unusual paragraphing; range of vocabulary; punctuation for time and effect)?
- 2) Can I apply SLURP techniques?



Dracula

Significant LOs:

- 1) Do I know the key terminology used to comment on plays?
- 2) Can I write an analytical essay with sustaining a clear line of argument?
- 3) Can I reference across a play?



World Poetry

Significant LOs:

- 1) Do I know the key terminology used to comment on poetry?
- 2) Can I offer a personal interpretation on a variety of poems?
- 3) Can I write an analytical poetry essay with increased depth?



Much Ado about Nothing

Significant LOs:

- 1) Do I know the key terminology used to comment on plays?
- 2) Can I write an analytical essay with sustaining a clear line of argument?
- 3) Can I reference across a play?

