



## Personal Investigation



College,  
Apprenticeships &  
Employment:  
Your future path  
awaits

# Art

NEA

**Make:** Follow set assignment brief to research and make

**Development:** Look at materials, skills and techniques for own development

## PATHWAYS

11



## Personal Investigation

mock

## Assignment Brief

**Contextual:**  
Use individual artist research that personally inspired

## Portfolio

**Contextual:**  
Use individual artist research that personally inspired

**Make:** Look at materials, skills and techniques for own development

**Evaluate:**  
Continued analysis of own work

## Personal investigation

## Eduqas Art & Design

eduqas  
Part of WJEC

10



**Make:** Look at materials, skills and techniques

**Contextual:**  
Use individual artist research that personally inspired



**Careers Link:**  
Historian, research



**Evaluate:**  
Continued analysis of own work

## Artist Study

# KS4

## Surfaces & Texture

## Nature

**Evaluate:**  
Analysis of own work



**Observation:**  
Self portrait, photography

**Contextual:**  
Cubism  
Pop Art

**Careers Link:**  
Photography

## Nature & Form

**Make:** Photomontages, Painting Skills, Line Drawing

## Portraiture



## Theme: Portraiture

**Make:** Pencil, charcoal, mark making, shape, distortion, collage, printing

## Picasso



**Make:** Photomontages, Painting Skills, Line Drawing

## Day of the Dead

**Contextual:**  
Day of the Dead and Mexican Culture

**Materials:**  
Clay, Fabric, Paint

**3D Make:**  
Clay Masks, Textile Mask

9

## Surrealism

**Principles:**  
Perspective



**Contextual:**  
Joan Miro  
Pablo Picasso  
Rene Magritte  
Salvador Dali

## Landscape



## Day of the Dead

**Contextual:**  
Day of the Dead and Mexican Culture

**Materials:**  
Clay, Fabric, Paint

**3D Make:**  
Clay Masks, Textile Mask

9

## Theme: Dreams & Imagination

8



**Contextual:**  
Colour Theory  
Wassily Kandinsky

## tonal range & mark making

**Observation:**  
Fine art principles, tone, texture & shade



**Make:**  
Sgraffito, applying marks to surface

**Evaluate:**  
Analysis of own work

**Materials:**  
What is textiles? fabric & textures

**Evaluate:**  
Analysis of own work

## Textiles & Texture



**Extra Curricular:**  
Visit the local church and make observational sketches

**Contextual:**  
David Hockney  
Deborah O'Hare  
Other artists that use applique

**Careers Link:**  
Working in the Arts Industry

## Theme: Nature & Architecture

**Careers Link:** Working in the Arts Industry

## Ceramics

**Materials:**  
Clay, firing temperatures, manipulation?



**Make:**  
Coil, pinch and slab pots

**Surface Texture:**  
Using drawings of nature to add surface design

**Contextual:**  
Wassily Kandinsky

# KS3



**Evaluate:** **Careers Link** **Job role**  
Analysis of own work

**Baseline Assessment:**  
What do you already know about art?



## Welcome

**Prior Knowledge:**

Drawing from memory, identifying skills and knowledge from KS2



**Prior Knowledge**  
Test

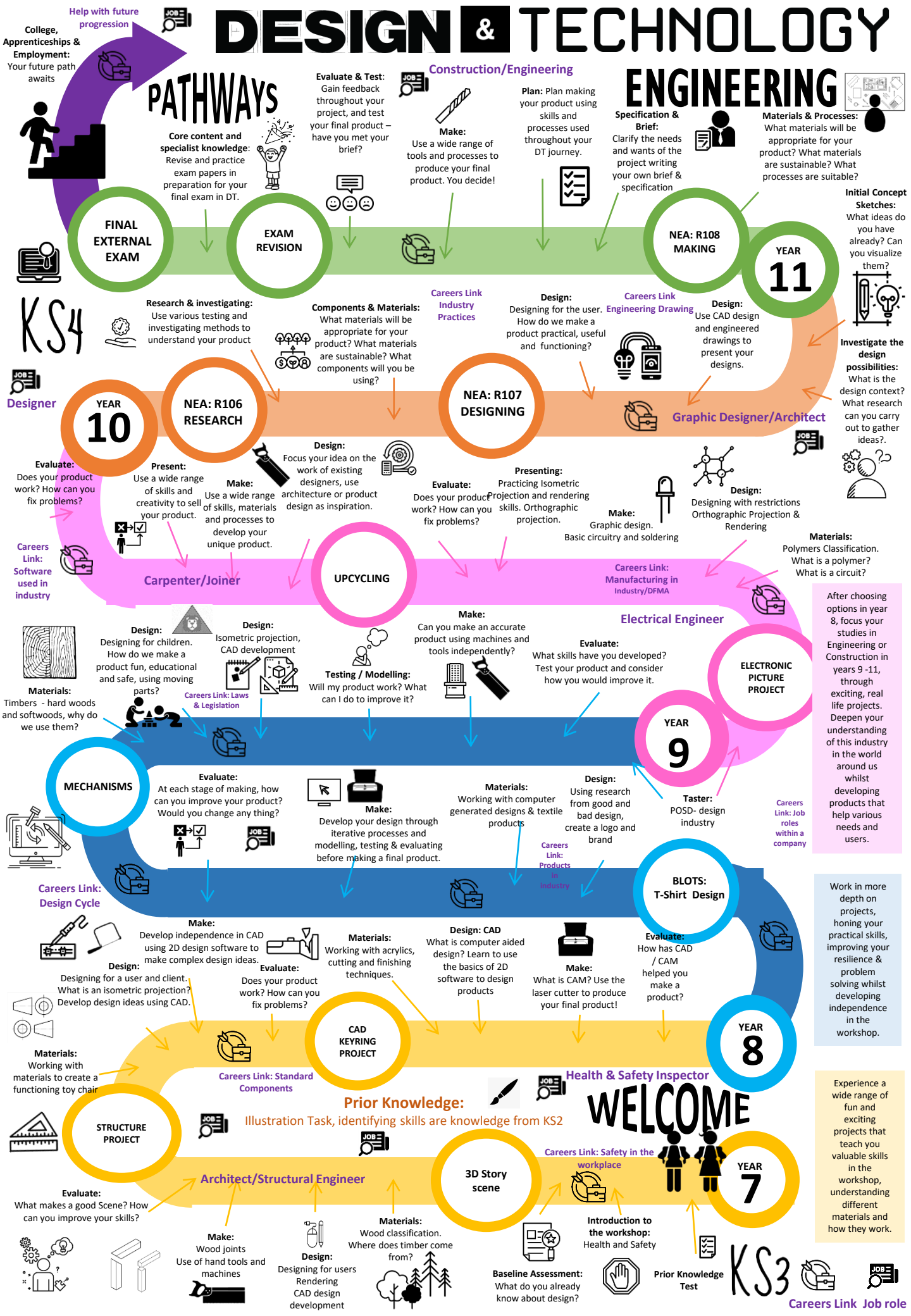
[illegible]



College, Apprenticeships & Employment  
Help with future progression  
JOB =

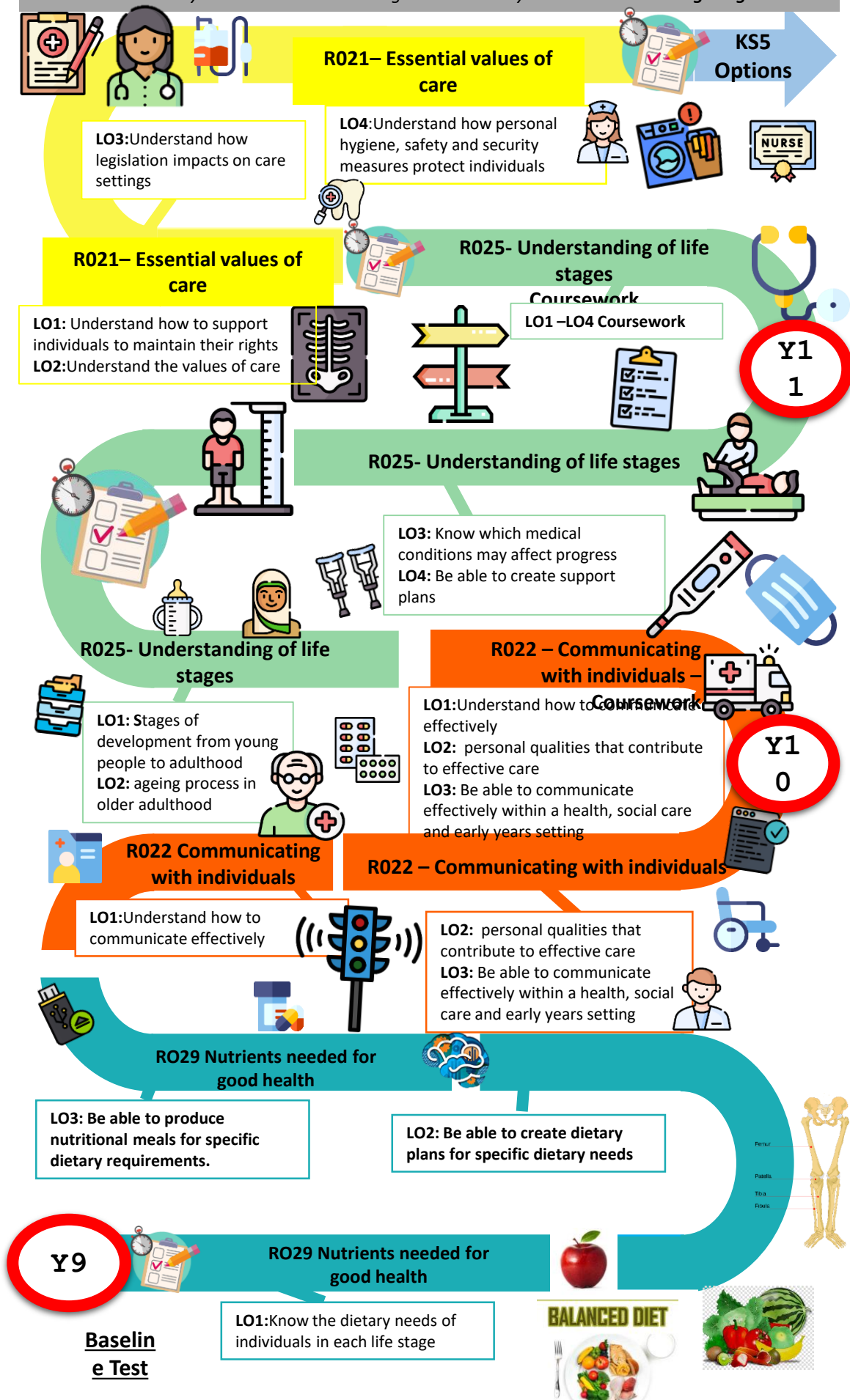
# DESIGN & TECHNOLOGY

# ENGINEERING



# KS4 CamNat Health and Social Care Curriculum Journey

*"I attribute my success to this - I never gave or took any excuse." Florence Nightingale*



Abbreviation: HSC = Health and Social Care